

A map of MSA 11200 Amherst Town-Northampton MA

Income as % of the MSA Median: Upper-Income (5), Middle-Income (23), Moderate-Income (3), Low-Income (1), All Others (3)

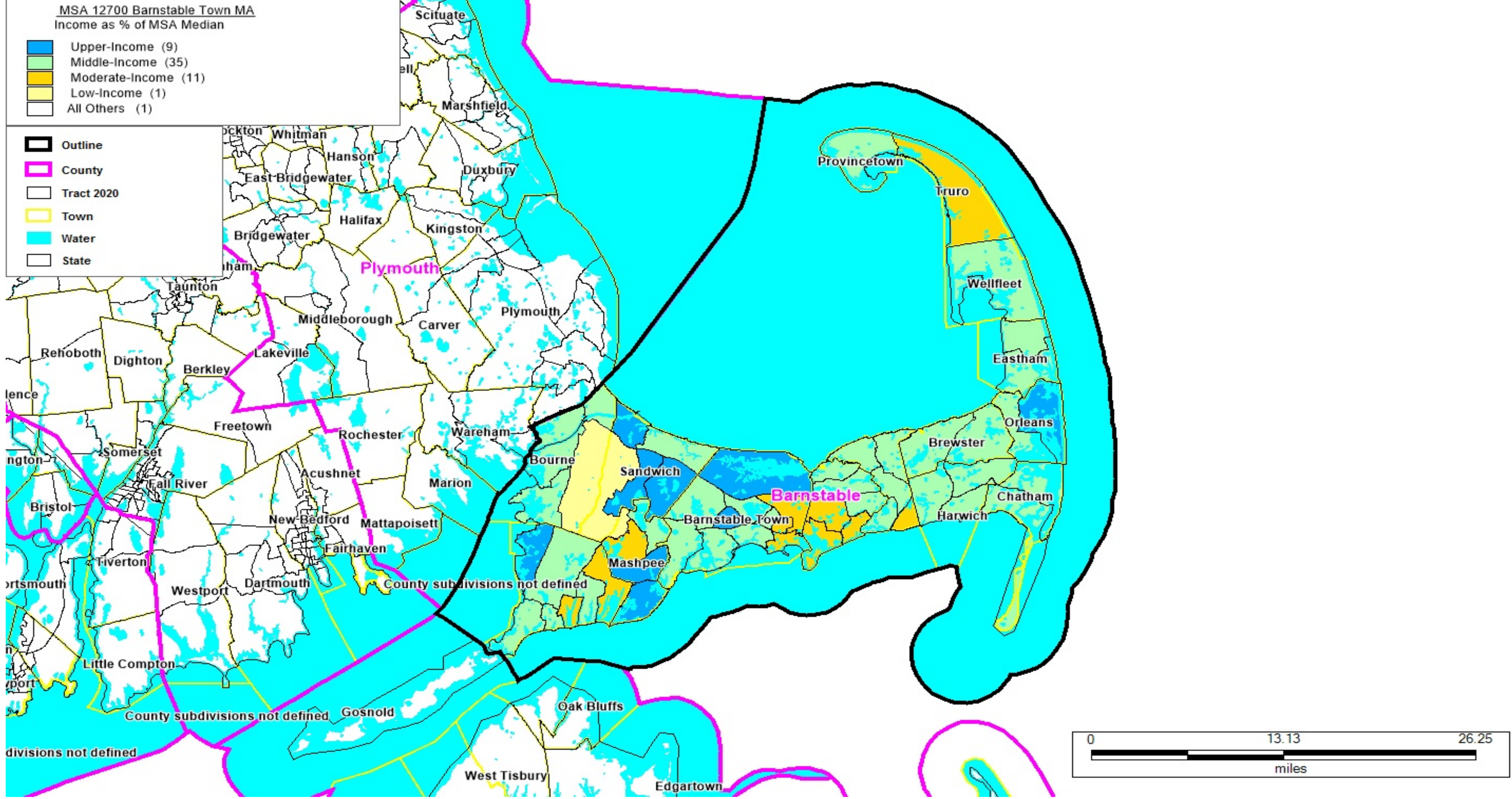
Outline - shown in a Black outline, County - shown in a pink outline, Tract 2020 - shown in a Black outline, Town - shown in a yellow outline, Water - shown in a blue outline, State - shown in a Black outline

# MASSACHUSETTS

**MSA 11200 Amherst Town-Northampton MA**

**FORMAT: STATECODE/COUNTYCODE/TRACTCODE**

25/015/8201.01, 25/015/8201.02, 25/015/8202.05, 25/015/8202.06, 25/015/8202.07, 25/015/8203.00, 25/015/8204.00,  
25/015/8205.00, 25/015/8206.00, 25/015/8207.00, 25/015/8208.01, 25/015/8208.02, 25/015/8209.00, 25/015/8210.00,  
25/015/8211.01, 25/015/8212.00, 25/015/8213.00, 25/015/8214.00, 25/015/8215.00, 25/015/8216.01, 25/015/8216.02,  
25/015/8217.00, 25/015/8219.01, 25/015/8219.03, 25/015/8219.04, 25/015/8220.00, 25/015/8222.00, 25/015/8223.00,  
25/015/8224.01, 25/015/8224.02, 25/015/8225.00, 25/015/8226.01, 25/015/8226.03, 25/015/8226.07, 25/015/8227.00



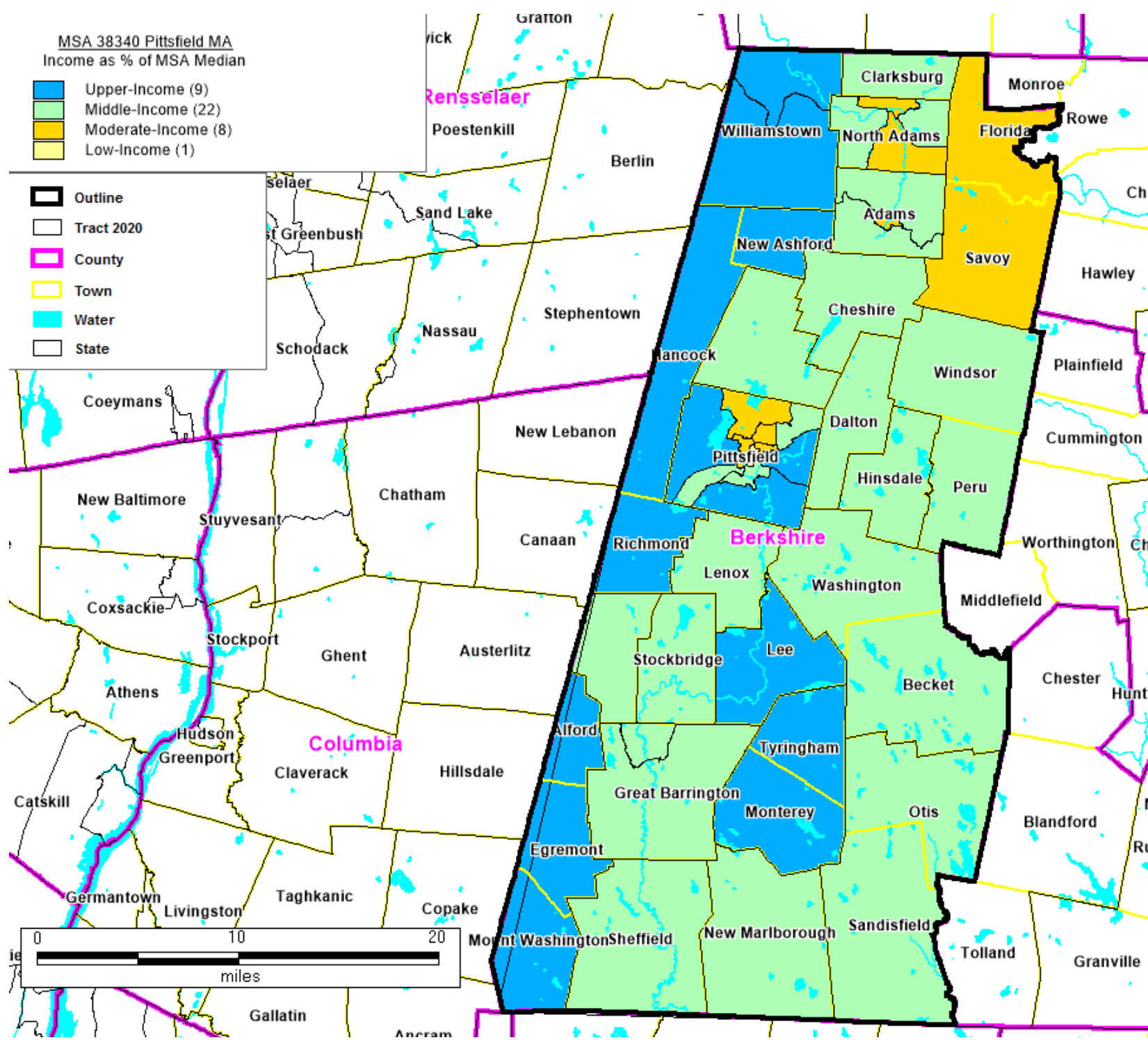
A map of MSA 12700 Barnstable Town MA  
Income as % of the MSA Median: Upper-Income (9), Middle-Income (35), Moderate-Income (11), Low-Income (1), All Others (1)  
Outline - shown in a Black outline, County - shown in a pink outline, Tract 2020 - shown in a Black outline, Town - shown in a yellow outline, Water - shown in a blue outline, State - shown in a Black outline

# MASSACHUSETTS

## MSA 12700 Barnstable Town MA

FORMAT: STATECODE/COUNTYCODE/TRACTCODE

25/001/0101.00, 25/001/0102.06, 25/001/0102.08, 25/001/0103.04, 25/001/0103.06, 25/001/0104.00, 25/001/0105.00, 25/001/0106.00, 25/001/0107.00, 25/001/0108.00, 25/001/0109.00, 25/001/0110.02, 25/001/0111.00, 25/001/0112.00, 25/001/0113.00, 25/001/0114.00, 25/001/0115.00, 25/001/0116.00, 25/001/0117.00, 25/001/0118.01, 25/001/0118.02, 25/001/0120.01, 25/001/0120.02, 25/001/0121.01, 25/001/0121.02, 25/001/0122.00, 25/001/0125.02, 25/001/0126.01, 25/001/0126.02, 25/001/0127.00, 25/001/0128.00, 25/001/0129.00, 25/001/0130.02, 25/001/0131.00, 25/001/0132.00, 25/001/0133.00, 25/001/0134.00, 25/001/0135.00, 25/001/0136.00, 25/001/0137.00, 25/001/0138.00, 25/001/0139.00, 25/001/0140.02, 25/001/0141.00, 25/001/0143.00, 25/001/0144.02, 25/001/0145.00, 25/001/0146.00, 25/001/0147.00, 25/001/0148.00, 25/001/0149.00, 25/001/0150.01, 25/001/0150.02, 25/001/0151.00, 25/001/0152.00, 25/001/0153.00, 25/001/9900.00



A map of MSA 38340 Pittsfield MA

Income as % of the MSA Median: Upper-Income (9), Middle-Income (22), Moderate-Income (8), Low-Income (1)

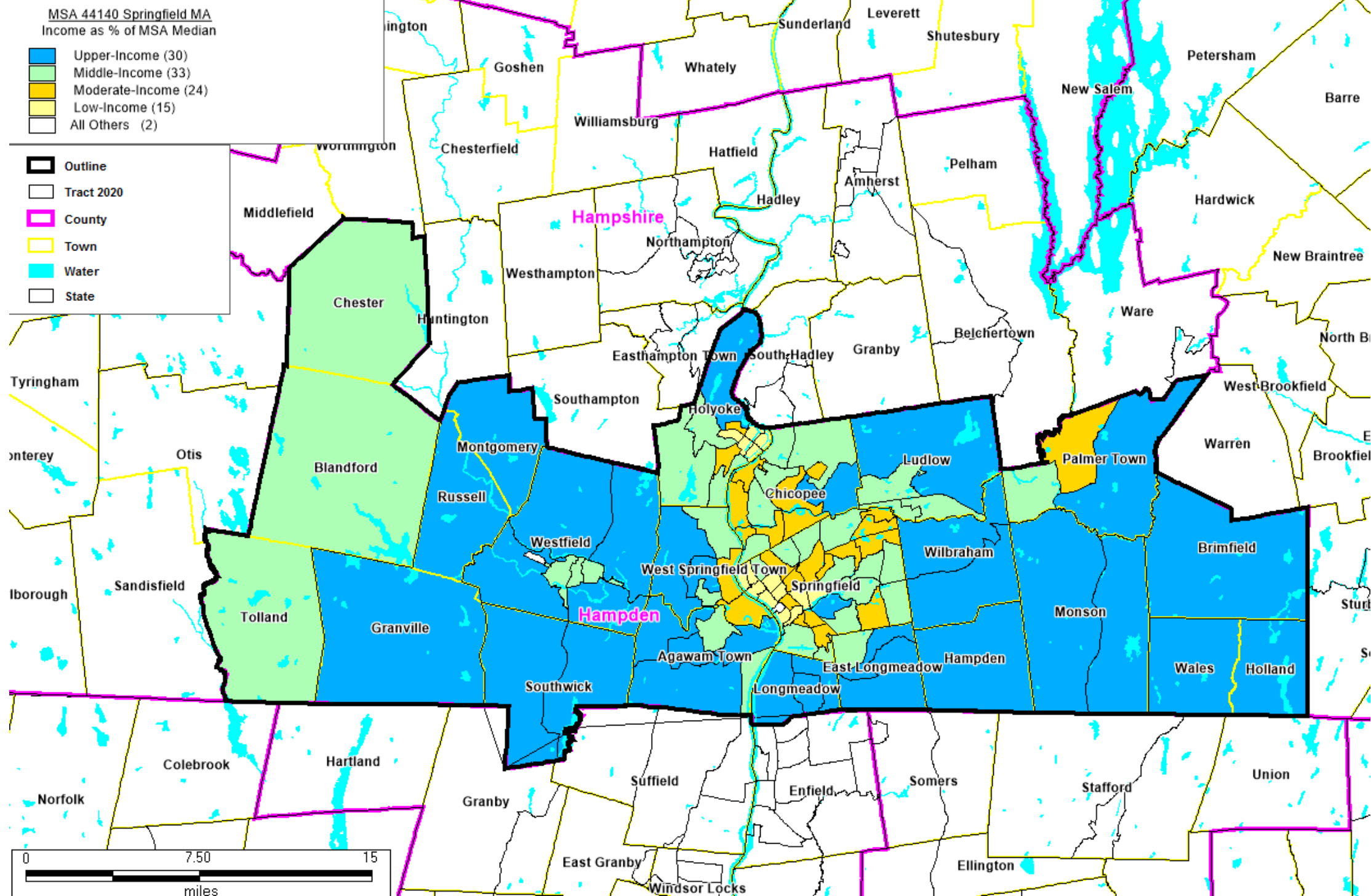
Outline - shown in a Black outline, County - shown in a pink outline, Tract 2020 - shown in a Black outline, Town - shown in a yellow outline, Water - shown in a blue outline, State - shown in a Black outline

# MASSACHUSETTS

## MSA 38340 Pittsfield MA

FORMAT: STATECODE/COUNTYCODE/TRACTCODE

25/003/9001.00, 25/003/9002.00, 25/003/9003.00, 25/003/9004.00, 25/003/9005.00, 25/003/9006.00, 25/003/9007.00,  
25/003/9008.00, 25/003/9009.00, 25/003/9011.00, 25/003/9111.00, 25/003/9121.00, 25/003/9131.00, 25/003/9141.00,  
25/003/9201.01, 25/003/9201.02, 25/003/9213.00, 25/003/9214.00, 25/003/9215.00, 25/003/9221.00, 25/003/9222.00,  
25/003/9223.00, 25/003/9231.00, 25/003/9241.00, 25/003/9251.01, 25/003/9251.02, 25/003/9261.00, 25/003/9311.00,  
25/003/9313.00, 25/003/9314.00, 25/003/9322.00, 25/003/9323.00, 25/003/9332.00, 25/003/9333.00, 25/003/9334.00,  
25/003/9342.00, 25/003/9343.00, 25/003/9351.00, 25/003/9352.00, 25/003/9353.00



A map of MSA 44140 Springfield MA  
Income as % of the MSA Median: Upper-Income (30), Middle-Income (33), Moderate-Income (24), Low-Income (15), All Others (2)  
Outline - shown in a Black outline, County - shown in a pink outline, Tract 2020 - shown in a Black outline, Town - shown in a yellow outline, Water - shown in a blue outline, State - shown in a Black outline

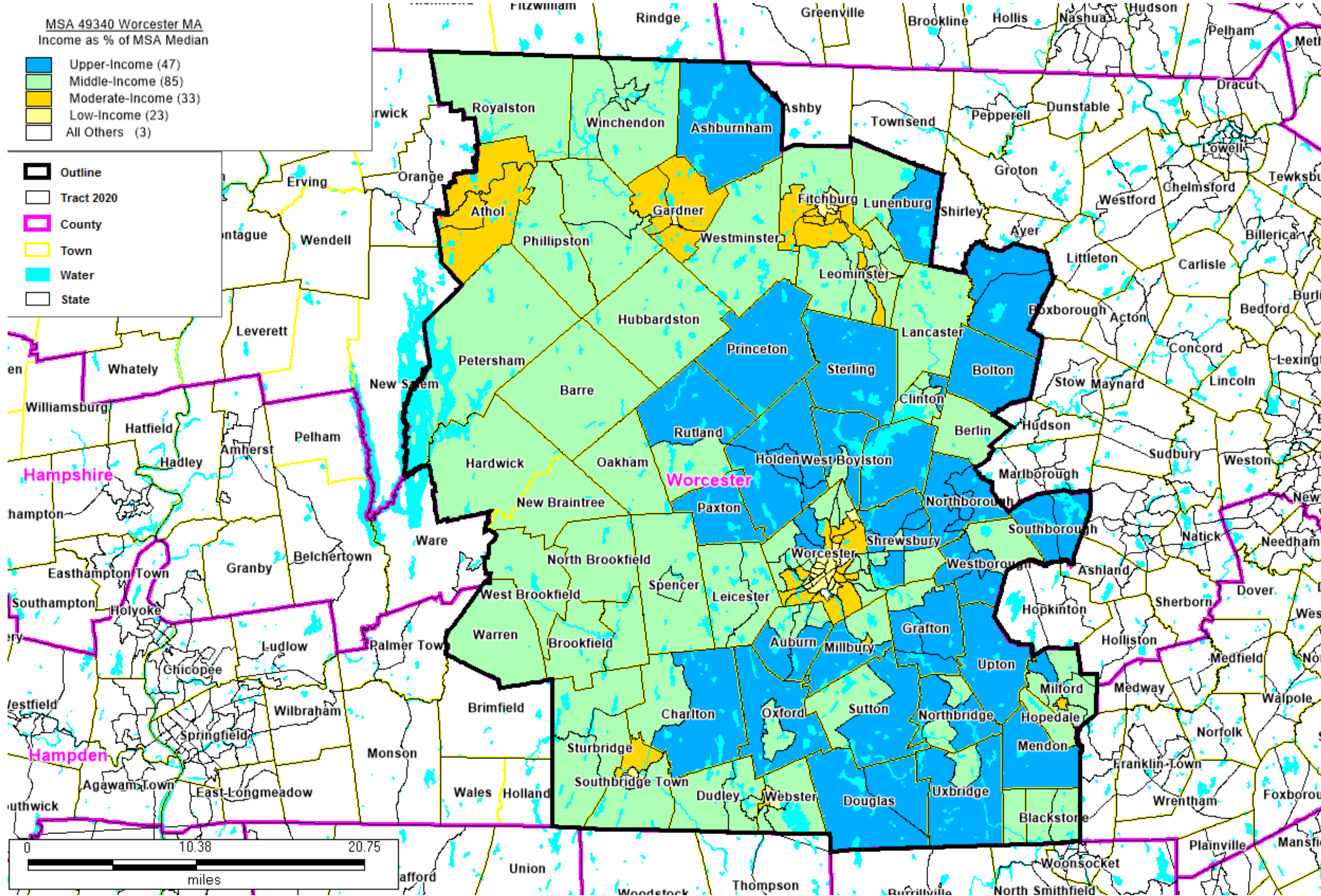
# MASSACHUSETTS

**MSA 44140 Springfield MA**

**FORMAT: STATECODE/COUNTYCODE/TRACTCODE**

25/013/8001.01, 25/013/8001.02, 25/013/8002.01, 25/013/8002.02, 25/013/8003.00, 25/013/8004.00, 25/013/8005.00, 25/013/8006.00, 25/013/8007.00, 25/013/8008.00, 25/013/8009.00, 25/013/8011.01, 25/013/8011.02, 25/013/8012.00, 25/013/8013.00, 25/013/8014.01, 25/013/8014.02, 25/013/8015.01, 25/013/8015.02, 25/013/8015.03, 25/013/8016.01, 25/013/8016.02, 25/013/8016.03, 25/013/8016.04, 25/013/8016.05, 25/013/8017.00, 25/013/8018.00, 25/013/8019.01, 25/013/8019.02, 25/013/8020.00, 25/013/8021.01, 25/013/8022.00, 25/013/8023.00, 25/013/8024.00, 25/013/8025.00, 25/013/8026.01, 25/013/8026.02, 25/013/8101.00, 25/013/8102.00, 25/013/8103.00, 25/013/8104.03, 25/013/8104.04, 25/013/8104.12, 25/013/8104.14, 25/013/8106.01, 25/013/8106.02, 25/013/8107.00, 25/013/8108.00, 25/013/8109.01, 25/013/8109.02, 25/013/8110.00, 25/013/8111.01, 25/013/8111.02, 25/013/8112.00, 25/013/8113.01, 25/013/8113.02, 25/013/8114.00, 25/013/8115.00, 25/013/8116.00, 25/013/8117.00, 25/013/8118.00, 25/013/8119.00, 25/013/8120.01, 25/013/8120.02, 25/013/8121.01, 25/013/8121.03, 25/013/8121.04, 25/013/8122.01, 25/013/8122.02, 25/013/8123.00, 25/013/8124.01, 25/013/8124.03, 25/013/8124.04, 25/013/8125.00, 25/013/8126.00, 25/013/8127.01, 25/013/8127.02, 25/013/8128.00, 25/013/8129.01, 25/013/8129.02, 25/013/8129.03, 25/013/8130.01, 25/013/8130.02, 25/013/8131.01, 25/013/8131.02, 25/013/8132.04, 25/013/8132.05, 25/013/8132.06, 25/013/8132.07, 25/013/8132.08, 25/013/8132.09, 25/013/8133.01, 25/013/8133.03, 25/013/8133.04, 25/013/8134.01, 25/013/8134.03, 25/013/8134.04, 25/013/8135.00, 25/013/8136.01, 25/013/8136.02, 25/013/8137.01, 25/013/8137.02, 25/013/8138.01, 25/013/8138.02





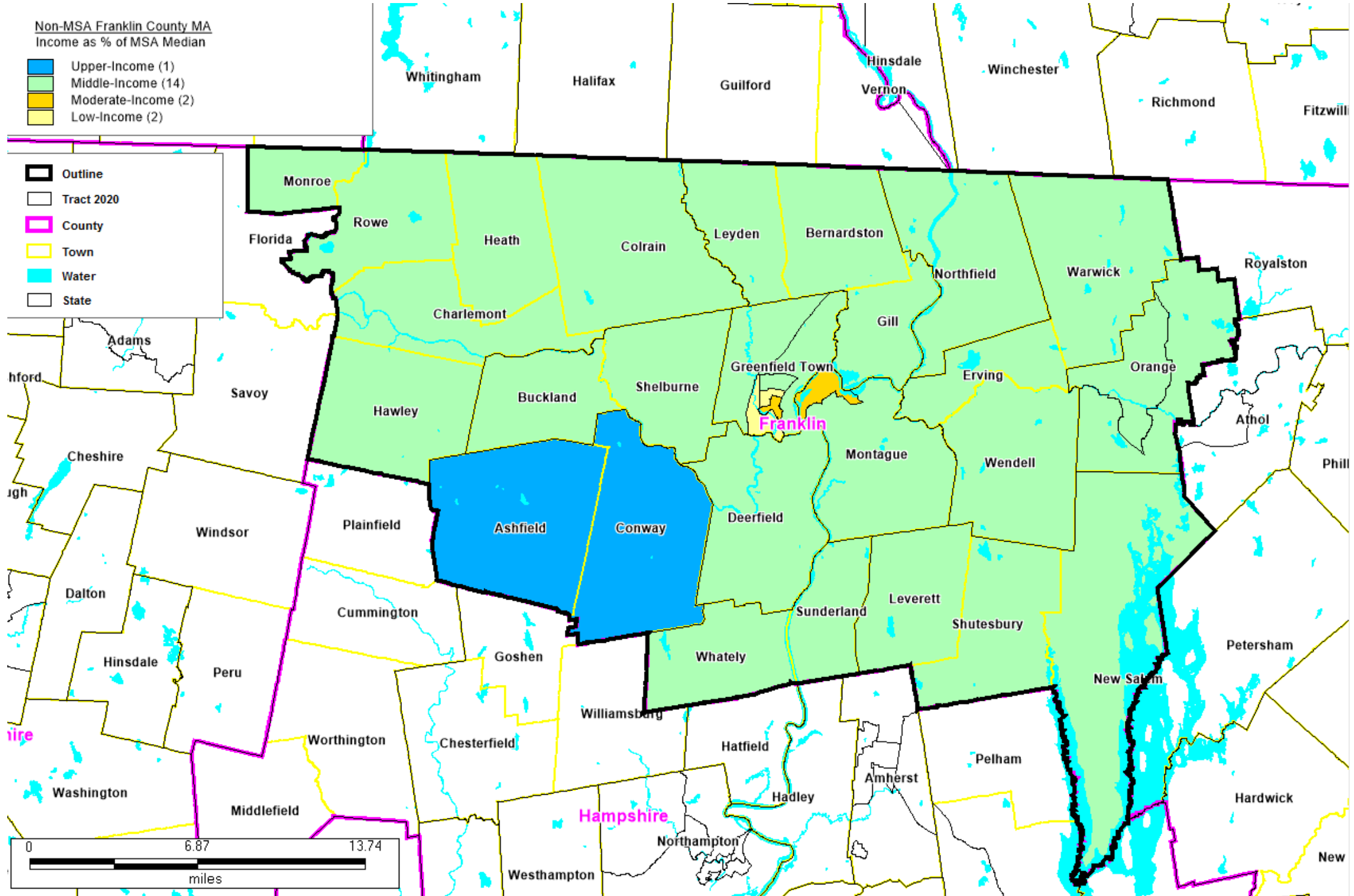
A map of MSA 49340 Worcester MA  
 Income as % of the MSA Median: Upper-Income (47), Middle-Income (85), Moderate-Income (33), Low-Income (23), All Others (3)  
 Outline - shown in a Black outline, County - shown in a pink outline, Tract 2020 - shown in a Black outline, Town - shown in a yellow outline, Water - shown in a blue outline, State - shown in a Black outline

# MASSACHUSETTS

MSA 49340 Worcester MA

FORMAT: STATECODE/COUNTYCODE/TRACTCODE

25/027/7001.00, 25/027/7011.01, 25/027/7011.02, 25/027/7022.01, 25/027/7022.02, 25/027/7031.00, 25/027/7032.00,  
25/027/7033.00, 25/027/7042.01, 25/027/7042.02, 25/027/7051.01, 25/027/7051.02, 25/027/7061.00, 25/027/7071.00,  
25/027/7072.00, 25/027/7073.00, 25/027/7074.00, 25/027/7075.00, 25/027/7081.00, 25/027/7091.00, 25/027/7092.01,  
25/027/7092.03, 25/027/7092.04, 25/027/7094.00, 25/027/7095.01, 25/027/7095.02, 25/027/7096.00, 25/027/7097.01,  
25/027/7097.02, 25/027/7101.00, 25/027/7102.00, 25/027/7103.00, 25/027/7104.00, 25/027/7105.00, 25/027/7106.01,  
25/027/7106.02, 25/027/7107.00, 25/027/7108.00, 25/027/7110.00, 25/027/7111.00, 25/027/7121.01, 25/027/7121.02,  
25/027/7131.00, 25/027/7151.00, 25/027/7161.01, 25/027/7161.02, 25/027/7162.00, 25/027/7163.00, 25/027/7171.00,  
25/027/7181.00, 25/027/7191.00, 25/027/7201.00, 25/027/7211.01, 25/027/7211.03, 25/027/7211.04, 25/027/7221.00,  
25/027/7231.00, 25/027/7241.00, 25/027/7251.00, 25/027/7261.00, 25/027/7262.00, 25/027/7271.00, 25/027/7281.00,  
25/027/7282.00, 25/027/7283.00, 25/027/7284.00, 25/027/7291.00, 25/027/7292.00, 25/027/7301.00, 25/027/7302.00,  
25/027/7303.00, 25/027/7304.01, 25/027/7304.02, 25/027/7305.00, 25/027/7306.00, 25/027/7307.00, 25/027/7308.01  
25/027/7308.02, 25/027/7309.01, 25/027/7309.02, 25/027/7310.01, 25/027/7310.02, 25/027/7311.01, 25/027/7311.02,  
25/027/7312.02, 25/027/7312.03, 25/027/7312.04, 25/027/7313.00, 25/027/7314.00, 25/027/7315.00, 25/027/7316.01,  
25/027/7316.02, 25/027/7317.00, 25/027/7318.01, 25/027/7318.02, 25/027/7319.00, 25/027/7320.01, 25/027/7320.02,  
25/027/7322.01, 25/027/7322.02, 25/027/7322.03, 25/027/7323.01, 25/027/7323.02, 25/027/7324.00, 25/027/7325.00,  
25/027/7326.00, 25/027/7327.00, 25/027/7328.01, 25/027/7328.02, 25/027/7329.01, 25/027/7329.02, 25/027/7330.00,  
25/027/7331.01, 25/027/7331.02, 25/027/7351.00, 25/027/7352.00, 25/027/7361.00, 25/027/7362.00, 25/027/7363.00,  
25/027/7364.00, 25/027/7365.00, 25/027/7371.00, 25/027/7372.00, 25/027/7373.00, 25/027/7381.00, 25/027/7382.01,  
25/027/7382.02, 25/027/7391.01, 25/027/7391.02, 25/027/7392.01, 25/027/7392.02, 25/027/7393.00, 25/027/7394.01,  
25/027/7394.02, 25/027/7395.00, 25/027/7401.01, 25/027/7401.02, 25/027/7402.00, 25/027/7411.01, 25/027/7411.02,  
25/027/7423.00, 25/027/7424.01, 25/027/7424.02, 25/027/7431.00, 25/027/7441.02, 25/027/7441.03, 25/027/7441.04,  
25/027/7442.01, 25/027/7442.02, 25/027/7443.00, 25/027/7444.00, 25/027/7451.00, 25/027/7461.00, 25/027/7471.01  
25/027/7471.02, 25/027/7481.00, 25/027/7491.00, 25/027/7492.00, 25/027/7501.00, 25/027/7502.00, 25/027/7503.00,  
25/027/7511.01, 25/027/7511.02, 25/027/7521.01, 25/027/7521.02, 25/027/7531.00, 25/027/7532.00, 25/027/7541.00,  
25/027/7542.00, 25/027/7543.00, 25/027/7544.00, 25/027/7551.00, 25/027/7552.01, 25/027/7552.02, 25/027/7561.01,  
25/027/7561.02, 25/027/7571.00, 25/027/7572.00, 25/027/7573.00, 25/027/7574.00, 25/027/7575.00, 25/027/7581.01,  
25/027/7581.03, 25/027/7581.04, 25/027/7591.00, 25/027/7601.00, 25/027/7611.00, 25/027/7612.00, 25/027/7613.00,  
25/027/7614.01, 25/027/7614.02



A map of Non-MSA Franklin County MA

Income as % of the MSA Median: Upper-Income (1), Middle-Income (14), Moderate-Income (2), Low-Income (2)

Outline - shown in a Black outline, County - shown in a pink outline, Tract 2020 - shown in a Black outline, Town - shown in a yellow outline, Water - shown in a blue outline, State - shown in a Black outline

# MASSACHUSETTS

## Non-MSA Franklin County MA

FORMAT: STATECODE/COUNTYCODE/TRACTCODE

25/011/0401.00, 25/011/0402.00, 25/011/0403.00, 25/011/0404.00, 25/011/0405.01, 25/011/0405.02, 25/011/0406.00,  
25/011/0407.01, 25/011/0407.02, 25/011/0408.00, 25/011/0409.00, 25/011/0410.00, 25/011/0411.00, 25/011/0412.00,  
25/011/0413.01, 25/011/0413.02, 25/011/0414.00, 25/011/0415.01, 25/011/0415.02